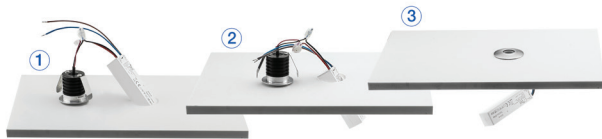
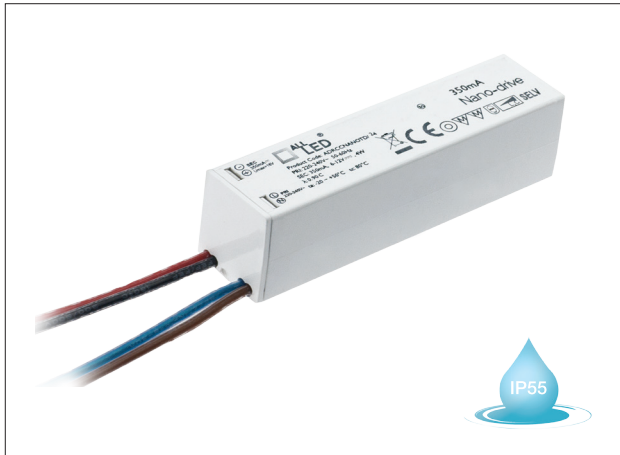


TECHNICAL DATASHEET

ADRCC350NANOTD/2-4

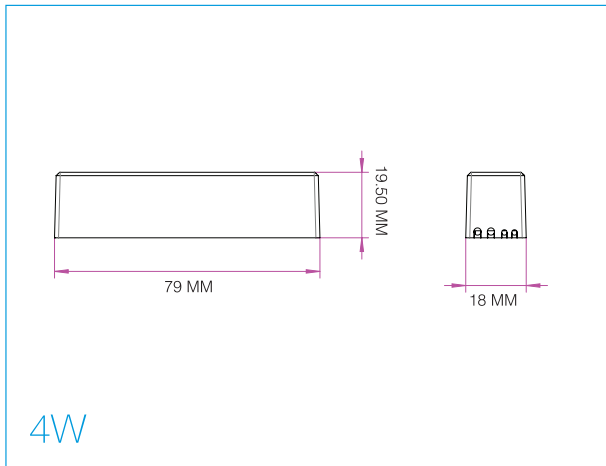
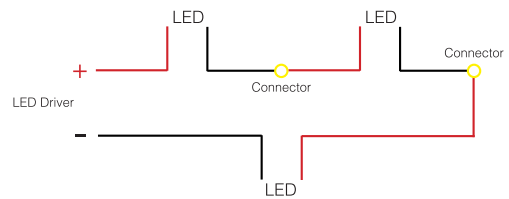
2-4W 350mA Constant Current LED Nano-Driver



PRODUCT FEATURES

- 1...4W 350mA LED Driver (on/off)
- 2...4W 350mA LED Driver (Dimmable)
- Fits Through a 28 mm hole
- IP55

SERIES WIRING REQUIRED



PRODUCT CODE	ADRCC350NANOTD/2-4
Operating Voltage	220-240V AC
Output Current	350mA
Output Voltage	6-12V DC
Maximum Load	1-4W (on/off) 2-4W (Dim)
IP	IP55
Temperature	-10~+40°C